

MIPS - Quality Category

A SHP Lunch 'n' Learn Series

Aaron Higgins

Data & Quality – Project Manager



shpllc.com | 912-691-5711





Performance Analytics

We offer real-time data dashboard backed by a team of analysts to deliver actionable information for better financial, operational, and population health management.



Provider Enrollment

Maintaining provider enrollment is an important and often time consuming process. We can get you enrolled and take the burden off your practice with ongoing enrollment maintenance.



Managed Care Contracting

Our contracting team has relationships with insurance companies and can help you negotiate the best fee schedules.



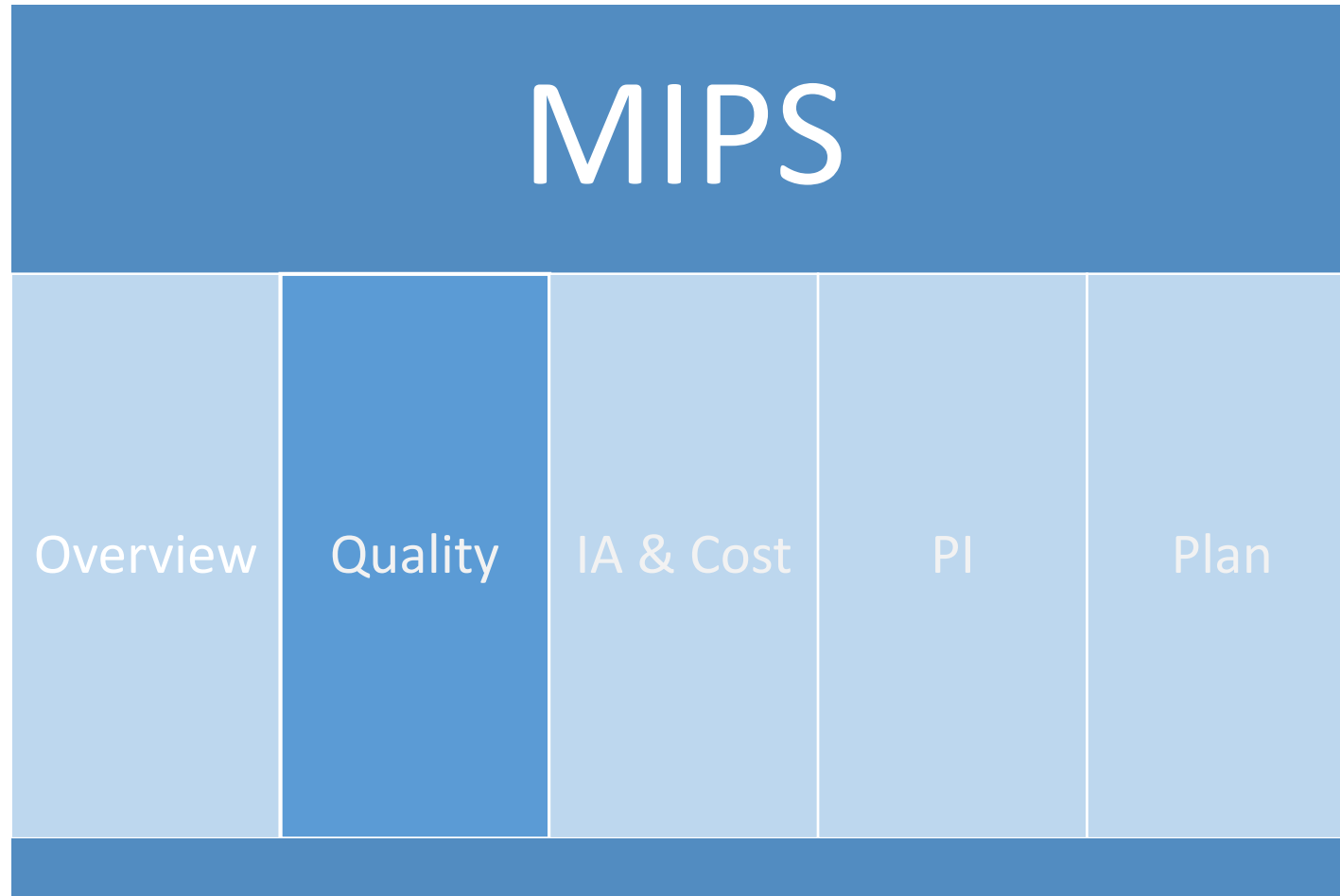
IPA & CIN Management

We manage four IPAs across the state of Georgia and provide consultation and management services for CINs nationwide.



shpllc.com | 912-691-5711

SHP Lunch 'n' Learn Series



shpllc.com | 912-691-5711

Speaker – Aaron Higgins

- Quality & Data Project Manager - SHP
- 10 years experience with Federal Quality programs, including Meaningful Use, PQRS, & MACRA/MIPS
- Joined SHP in the Spring 2019



shpllc.com | 912-691-5711

SHP
Strategic Healthcare Partners

Poll – Past Participation



shpllc.com | 912-691-5711

Quality Category



shpllc.com | 912-691-5711

Quality – A History

1. Quality stems from the Physician Quality Reporting System (PQRS) and before that, as Physician Quality Reporting Initiative (PQRI), measure program
2. Meaningful Use expanded the pool of measures with the creation of the Clinical Quality Measures (CQM)
3. In 2015, MACRA combined the two data elements to form the Quality Category Measure Collection Types



Origins of Measures

- Measures were created by medical groups & organizations
- Backed by science and research
- CMS curates the measures with public input and feedback



shpllc.com | 912-691-5711

Changing Measures

- Annually there is a call for new measures, but you must become a steward or have one lined up
- Measures are removed when they are “topped out” or if the steward requests it
- Errors in formulas have occurred, and measures are changed



Poll - Measures



shpllc.com | 912-691-5711

Measure Collection Types

- Quality has six “Collection Types”
- All measures fall into at least one Collection Type
 - Overlap between Types
- Each Collection Type has its own measures



Measure Collection Types Details

- Of the six Types, two are the most popular for practices:
 - **MIPS CQM** (formerly Registry) – 208 Measures
 - **eCQM** – 2015 CHERT required – 50 Measures
- There could be a major score difference between overlapping Measures



Measure Collection Types Details Cont.

- Other Types:
 - **Qualified Clinical Data Registry (QCDR)**
 - **Claims – Admin & Medicare**
 - **CMS Web Interface**
 - **CAHPS for MIPS**



Measure ~~Types~~ Families

- Efficiency - 7
- Immediate Outcome - 7
- Outcome - 50
- Pt. Engagement Experience - 12
- Patient Reported Outcomes - 18
- Process - 170
- Structure - 4

Priority Type

High – greater weight

Regular – standard weight



shpllc.com | 912-691-5711

How a Measure Works



shpllc.com | 912-691-5711

What do Quality Measures Measure?

- Measures measure patients
 - Denominator
 - Exclusion
 - Numerator
 - Treatment Opportunity

- Example measure: MIPS CQM 128 BMI



shpllc.com | 912-691-5711

Measures In Action - MIPS CQM 128

- Female, age 28
- 5' 3" 148 lbs.
- Not pregnant
- BMI 25.7

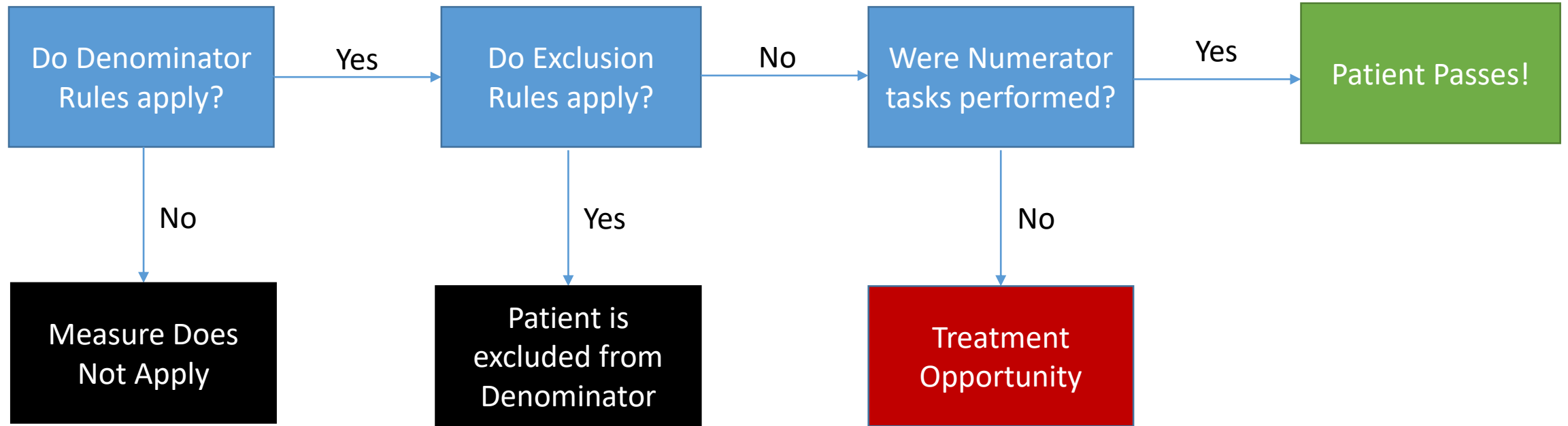
Solution:

- Provide follow-up plan and/or referral



shpllc.com | 912-691-5711

Measure Decision Tree



Poll – Submission Methods



shpllc.com | 912-691-5711

Submission Methods

- Submission for 2019 will open in early Q1 2020 and close March 31, 2020
- Submission methods: EHR, Registry, QCDR, CMS Portal, or APM.



shpllc.com | 912-691-5711

Reporting Quality

- A minimum of six measures are required
 - Submit more for extra Quality points
- You can pick measures from any Collection Type as long as your submission method supports it
- You must have one Outcome measure
- You cannot report an overlapping measure twice



MIPS Quality Bonus Points

- **Quality Improvement** – Up to 10 points in Quality
- **End-to-End Submission** – Up to 6 points in Quality
- **Additional Measures** – Up to 6 points in Quality for submitting more than 6 measures that are High or Outcome



shpllc.com | 912-691-5711

The Proposed Rule



shpllc.com | 912-691-5711

Proposed Rule

- Read the Proposed Rule Summary
 - <https://qpp.cms.gov/about/resource-library>
 - 2020 Quality Payment Program Proposed Rule Overview Fact Sheet (28 pg)
- Provide feedback to CMS before Sept 27
 - www.regulations.gov
 - Search for: CMS-1715-P
- Attend the next three webinars for more details



Proposed Changes for 2020 & Beyond

- CMS plans on adjusting removal criteria
- Benchmark changes to avoid patient risk
- QCDRs & Registries must submit data for each category



shpllc.com | 912-691-5711

Proposed Changes for 2020 & Beyond Cont.

- QCDR/Registry performance feedback in a timely manner
- QCDR Measure Creation/Removal
- QCDRs & registries must submit data for each category



shpllc.com | 912-691-5711

Measure Changes

- 55 Measures Recommended for Removal
- 78 Measures Recommended for Changes
- Full 1704 page proposal has reasons/changes listed



What Should My Practice Do?

- Continue to use measures
- The Final Rule could or could not have these changes
- The Final Rule could have entirely different changes than what was proposed
- CMS has changed based on feedback before



shpllc.com | 912-691-5711

Next Steps

- Attend SHP's next Lunch 'n' Learn series:
 - IA & Cost – 10/3 @ 12:00pm
 - Promoting Interop – 10/10 @ 12:00pm
 - Game Plan – 10/17 @ 12:00pm
- Contact SHP with your MIPS questions or if you need help



shpllc.com | 912-691-5711

Got Questions?

Send us your MIPS questions:
quality@shpllc.com



shpllc.com | 912-691-5711